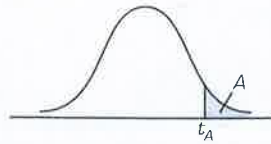


Table 4 Critical Values of the Student *t* Distribution



Degrees of freedom	$t_{0.100}$	$t_{0.050}$	$t_{0.025}$	$t_{0.010}$	$t_{0.005}$	Degrees of freedom	$t_{0.100}$	$t_{0.050}$	$t_{0.025}$	$t_{0.010}$	$t_{0.005}$
1	3.078	6.314	12.706	31.821	63.657	29	1.311	1.699	2.045	2.462	2.756
2	1.886	2.920	4.303	6.965	9.925	30	1.310	1.697	2.042	2.457	2.750
3	1.638	2.353	3.182	4.541	5.841	35	1.306	1.690	2.030	2.438	2.724
4	1.533	2.132	2.776	3.747	4.604	40	1.303	1.684	2.021	2.423	2.704
5	1.476	2.015	2.571	3.365	4.032	45	1.301	1.679	2.014	2.412	2.690
6	1.440	1.943	2.447	3.143	3.707	50	1.299	1.676	2.009	2.403	2.678
7	1.415	1.895	2.365	2.998	3.499	55	1.297	1.673	2.004	2.396	2.668
8	1.397	1.860	2.306	2.896	3.355	60	1.296	1.671	2.000	2.390	2.660
9	1.383	1.833	2.262	2.821	3.250	65	1.295	1.669	1.997	2.385	2.654
10	1.372	1.812	2.228	2.764	3.169	70	1.294	1.667	1.994	2.381	2.648
11	1.363	1.796	2.201	2.718	3.106	75	1.293	1.665	1.992	2.377	2.643
12	1.356	1.782	2.179	2.681	3.055	80	1.292	1.664	1.990	2.374	2.639
13	1.350	1.771	2.160	2.650	3.012	85	1.292	1.663	1.988	2.371	2.635
14	1.345	1.761	2.145	2.624	2.977	90	1.291	1.662	1.987	2.368	2.632
15	1.341	1.753	2.131	2.602	2.947	95	1.291	1.661	1.985	2.366	2.629
16	1.337	1.746	2.120	2.583	2.921	100	1.290	1.660	1.984	2.364	2.626
17	1.333	1.740	2.110	2.567	2.898	110	1.289	1.659	1.982	2.361	2.621
18	1.330	1.734	2.101	2.552	2.878	120	1.289	1.658	1.980	2.358	2.617
19	1.328	1.729	2.093	2.539	2.861	130	1.288	1.657	1.978	2.355	2.614
20	1.325	1.725	2.086	2.528	2.845	140	1.288	1.656	1.977	2.353	2.611
21	1.323	1.721	2.080	2.518	2.831	150	1.287	1.655	1.976	2.351	2.609
22	1.321	1.717	2.074	2.508	2.819	160	1.287	1.654	1.975	2.350	2.607
23	1.319	1.714	2.069	2.500	2.807	170	1.287	1.654	1.974	2.348	2.605
24	1.318	1.711	2.064	2.492	2.797	180	1.286	1.653	1.973	2.347	2.603
25	1.316	1.708	2.060	2.485	2.787	190	1.286	1.653	1.973	2.346	2.602
26	1.315	1.706	2.056	2.479	2.779	200	1.286	1.653	1.972	2.345	2.601
27	1.314	1.703	2.052	2.473	2.771	∞	1.282	1.645	1.960	2.326	2.576
28	1.313	1.701	2.048	2.467	2.763						